



ALTHEORA

smart & sustainable
industrial leader



“

Created to face the industry's ecological, societal and economic challenges, ALTHEORA is an industrial leader that brings together business line expertise and know-how from French industries producing mostly on French national territory.

Bénédicte Durand – CEO

”



ALTHEORA

smart & sustainable
industrial leader

ALTHEORA is the French leader in composite material applications.

Since 1934, the company has been known for its specific tools development in construction and public works (boxes for electrical, gas, telecommunications, and other applications). The Group has developed **expertise** and **state-of-the-art technologies** in wide-ranging and exacting sectors such as railways, aeronautics, ground mobility, healthcare, leisure, urban outdoor furnishings, and more. ALTHEORA offers **solutions that are 100% integrated**, starting from R&D to production. Alongside its clients, it develops new products responding to **the needs of tomorrow** (new types of mobility, smart cities, etc.).

The Group is built around three centers of excellence:



Benefiting from the know-how of employees spread across **4 sites in the Auvergne-Rhône-Alpes region**, as well as **1 site in Romania**, it currently supports **more than 500 international clients**. ALTHEORA won the best **innovation award** in the Design & Furniture category of the **JEC Innovation Awards**.



key figures

HALF-YEAR 2021 RECORDED SALES

€17.1M

+35% compared to 2020

€1.5M PER YEAR

dedicated to
INVESTMENTS
(R&D, CAPEX, OPEX)

4 SITES

in Auvergne Rhône-Alpes

220

EMPLOYEES
ALTHEORA
FRANCE AND ROUMANIE

1 SITE

in Romania

ALMOST
90 YEARS
OF EXPERIENCE

32 PRESSES

from 100 to 2,000 tons
that are mostly robot-operated and automated

15 PRESSES

from 50 to 550 tons
for technical or class A parts

10 PAINTING

CABINS

2 RTM

LOW PRESSURE INJECTION MACHINES

10M
parts
produced
PER YEAR

6000
references

500
customers

28
countries

our story : Taking up technical challenges for 90 years

For almost 90 years, we have used our know-how to serve the needs of our clients, industry, and the people of our territory.

Each step in our development has helped us to **face the challenges of the moment**: setting up electricity distribution networks, the arrival of polyester, the industry digitalization, the development of natural and recyclable materials...

Today, ALTHEORA is meeting the challenge of the **4th Industrial Revolution**, meaning that we will create sustainable growth by accelerating CSR transformation in companies sharing our vision, and in so doing, revitalize our territory.



19
34

Creation of **MECELEC**
(electrical networks)



19
58

Introduction of plastic
and composite elements



19
76

Creation of **MCR**
(MECELEC COMPOSITES & Recyclage)



19
97

1st key partnership with **NEXANS**
(electrical cabinets)



20
13

Construction of a
2nd plant in **MAUVES**



20
19

Creation of **MCI**
Transforming bio-sourced composite
materials at an industrial scale



20
20

Acceleration of the Strategic Plan
implementation in 3 areas:
**Innovation, CSR
& international development**



20
21

Creation of an innovative and
respectful industrial ecosystem:
ALTHEORA
Creation of ALTHEORA's
innovation booster:
ALTHEORA SHIFT

our ambition

create the first French symbiotic ecosystem

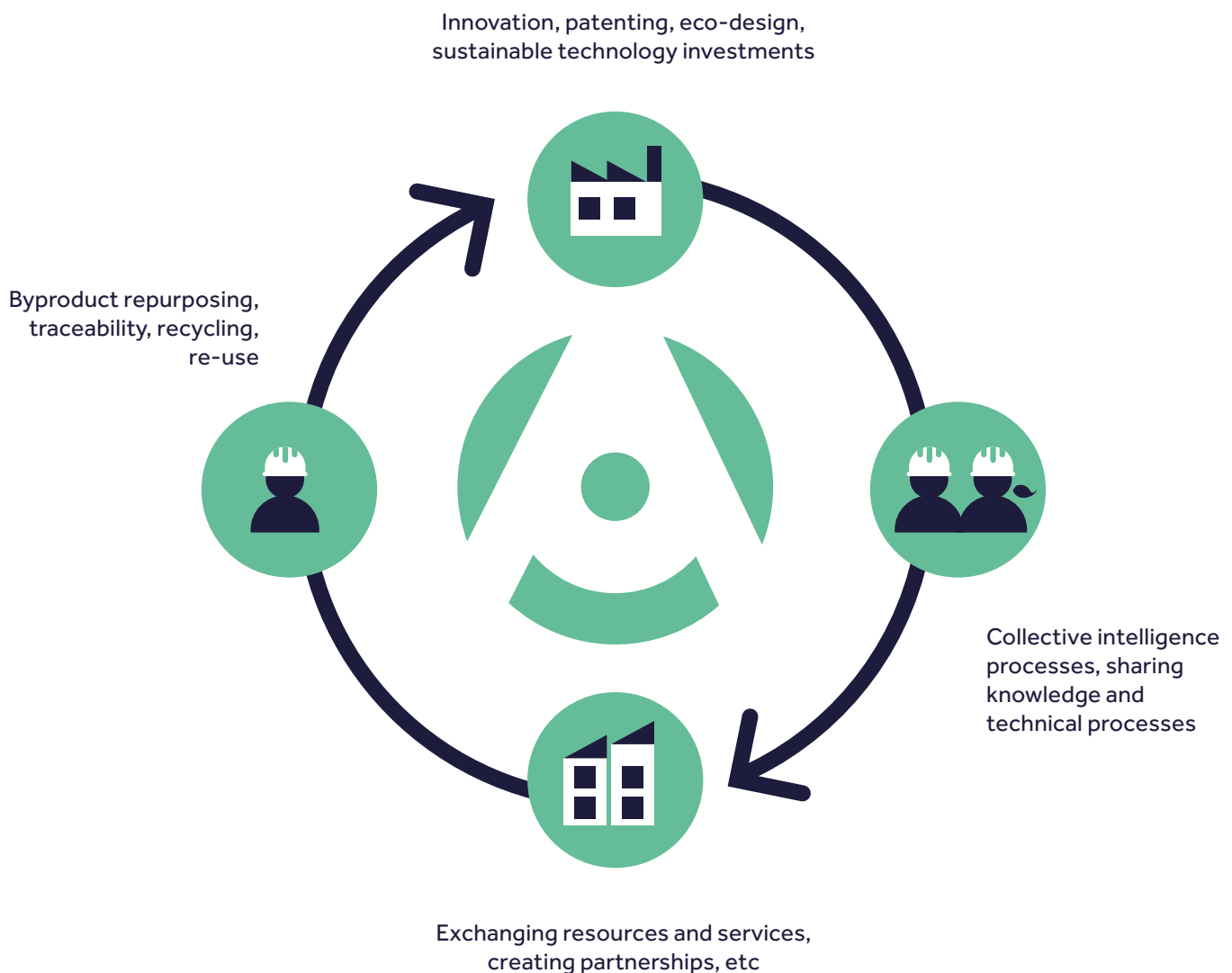
ALTHEORA was made to meet the 4th Industrial Revolution Challenges.

And because challenges are never met alone, it is **by working together** that industrial companies contribute collectively to **create a world that generates sustainable and inclusive growth.**

Working together means **sharing the same vision and the same values.** As an industrial leader, ALTHEORA leads an ecosystem in which each company continually seeks to **improve its practices**, starting by **reducing its environmental footprint** and **favoring the well-being of its employees.**

Convinced that its responsible approach is a **powerful driver of innovation and transformation**, ALTHEORA adopted a **Corporate Social Responsibility (CSR)** approach that is a first in its sector.

But its participation in the 4th Industrial Revolution is not limited to the individual efforts of companies in its ecosystem. Its uniqueness rests in its **drive to create a symbiotic industrial ecosystem with these companies and start-ups.**



our values

ALTHEORA above all is a story of people who share and transmit their team spirit, know-how and values. We are committed to seek ways to extend our responsibility throughout the ALTHEORA value chain, seeking to systematically combine competitiveness and durable positive impact.



our CSR commitments

make the responsibility be our driving force

Within its ecosystem, ALTHEORA adopted a **Corporate Social Responsibility (CSR)** approach that is a first in its sector.

Every day, we combine our efforts to be recognized as a competitive industrial ecosystem, a responsible employer, a provider of innovative environmentally responsible solutions, and a partner that can be trusted.

To monitor our non-financial performance,

ALTHEORA has chosen to refer to the **Sustainable Development Goals (SDGs)** as they are defined by the UN. 16 SDGs were selected to lead **five large impact areas**. For each of these, ALTHEORA defines and implements a dedicated CSR policy, alongside its stakeholders.

**REDUCE
OUR ENVIRONMENTAL
FOOTPRINT**

**IMPROVE
WELL-BEING
FOR EVERYONE**

**STEER
A RESPONSIBLE
SUPPLY CHAIN**

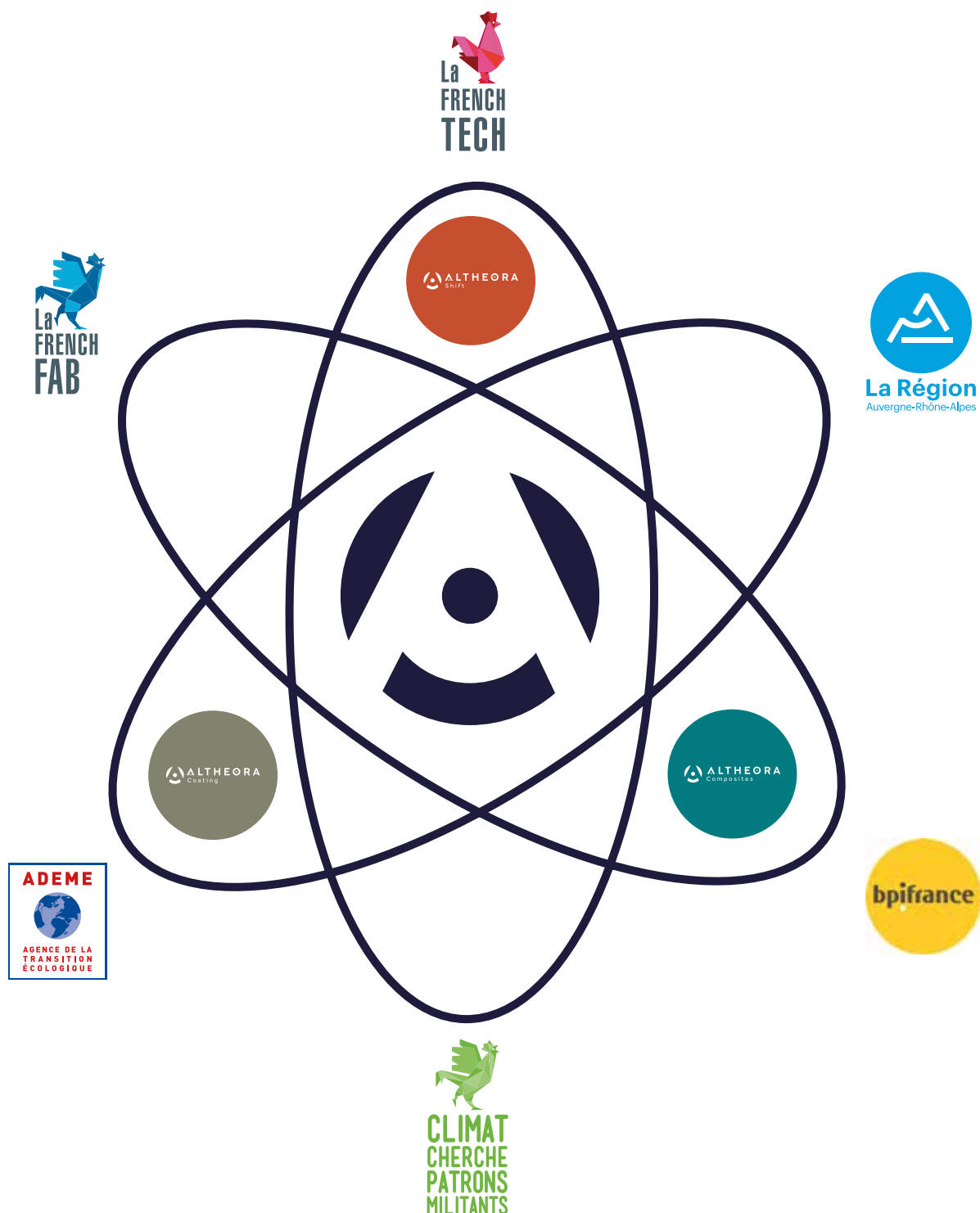
**COMMUNICATE
WITH COMPLETE
TRANSPARENCY**

**GET INVOLVED
IN THE ORGANIZATION
OF THE LOCAL
ECOSYSTEM**



our ecosystem

**the innovation and the environmental responsibility
serving the industrial revolution**





ALTHEORA supports French-sourced manufacturing. Its manufacturing sites are primarily in France, and more than 65% of the company's purchases are made in the AURA region. ALTHEORA is a member of La French FAB, which supports the French industry modernization.



Innovation fuels growth at ALTHEORA. ALTHEORA SHIFT is its innovation accelerator. Its engineers / researchers support the development of all technological projects focused on industry, and on eco-responsibility. ALTHEORA is a member of French Tech.



ALTHEORA's story begins in AURA. It is also in this region that it continued to develop alongside its population, its resources, and its administration. By participating in revitalizing the local industrial fabric, ALTHEORA strives to be the leading high-performance and responsible mid-cap industrial company in the AURA region.



ALTHEORA was selected among French companies by BPI France to receive support for acceleration and development, allowing the company to be labeled a «national and international champion».



ALTHEORA SHIFT is both an innovation division serving the entire ecosystem, and an accelerator for innovative projects that support the development of start-ups selected by ALTHEORA. It is a true technological laboratory, developing custom projects for ALTHEORA's clients. As a business accelerator, it nurtures technologically innovative projects that generate positive impact, and that have the potential to be integrated into the ALTHEORA ecosystem.



Within ALTHEORA Coating, MC Coating is the company that is specialized in finishing work on industrial parts. Its experts develop the technological know-how that ensures a finished product that is ready to be integrated.



Within ALTHEORA Composites, MECELEC Composites currently supports more than 500 clients in their projects, from the creation to the end-use application. In this new organization it provides know-how that is recognized in 28 countries, and an ambitious CSR transformation policy.



By joining the "Coq Vert" BPI France community as a pioneer, ALTHEORA pursues its mission: create, steer, and develop an industrial ecosystem to join the 4th Industrial Revolution.



To guarantee economic growth and employment while meeting environmental challenges, ALTHEORA, in partnership with ADEME, develops audit and measuring tools that enable to monitor its impact.

our trades

ALTHEORA deploys **strong industrial synergy** by combining business lines and know-how that always provide the best and most wide-ranging solution to meet its clients expectations. ALTHEORA is built around three centers of excellence, each of them housing companies that are specialized experts in their fields:



MECELEC Composites, leader in processing composite materials

MECELEC Composites masters technological know-how and cultivates **innovation in the processing of composite materials**.

With more than 6,000 product references and 500 clients in 28 countries, MECELEC Composites is positioned as the expert partner in consulting and engineering, supporting projects from proof-of-concept to production. Our teams develop processes that allow us **to support projects from their creation to their end use, whatever the technical constraints are**, and as such ensuring client satisfaction.

MECELEC Composites transforms composite material in many sectors: **Aeronautics, Railway Industry, Ground Mobility, Sports, Leisure, Water Sports and Medical**.

MECELEC Composites masters all the major composite processes:

Thermosetting compression (SMC), Thermoplastic Injection, Contact, R.T.M. and Injection (resin transfer molding). It processes all existing materials, and produces technically sophisticated parts (of non-standard sizes, resistant to extreme temperatures, fireproof, with strong electrical insulation properties, etc.). The company also offers finishing work for parts up to the end product (painting, marking, insertion, cabling, surface treatments, etc.).



Today, with its 3 manufacturing sites, Mauves, and St-Agrève (Ardèche, France), St-Etienne-de-Saint-Geoirs (Isère, France) and its **exclusive industrial presses in Europe***, MECELEC Composites offers its clients, parts that meet complex technical specifications and strict standards, whether in terms of resistance, flexibility, impermeability, or electrical insulation.

automotive supplier excluded



MPC, The dedicated offer for the construction industry in Eastern Europe

MPC Romania is the manufacturing of cabinets (electricity, gas, telecom, water, etc.), in composite materials in Eastern Europe. For the local construction industry, its offer meets their expectations regarding the support and the technical specifications. Its manufacturing site is located in Cluj-Napoca (Romania).



MC Coating, specialist in industrial parts finishing work

MC Coating is the industrial painting and coating specialist. Its experts develop **technological skills in liquid and powdered painting.**

Its R&D team develops customised formulas for maximum long-term protection of products, even in extreme environments. It constantly sources new types of paint that improve the parts performance.

The combination of MC Coating's skills, cutting-edge technical expertise and manufacturing solutions help to increase productivity, reduces costs and improve the finished parts quality, **whatever the part type or the clients' application requirements.**

Its 10 paint booths of equipment make **MC Coating a leader in its market.** Its manufacturing site is located in Bourg-lès-Valence (Drôme, France).



ALTHEORA Shift, innovation laboratory and industrial projects booster

ALTHEORA Shift is a true innovation accelerator.

Its mission: inspire and accelerate the innovative and sustainable industrial patents and projects of tomorrow.

In a hybrid domain that mixes applied research and industrial manufacturing, ALTHEORA Shift supports selected projects and start-ups, sharing its R&D teams, as well as its technological, commercial, marketing and legal resources to make the industrial fabric more dynamic, and foster the 4th Industrial Revolution.

For ALTHEORA, **SHIFT is a state of mind**: It is the capacity to think «out of the box», to look at problems from another angle, and in doing so, imagining new technological solutions.

With this vision in mind, ALTHEORA Shift has created **GENDZO PROCESS®**, an exclusive hybrid process. This is an innovative and efficient alternative to painted parts resulting from the assembly of several parts and produced in medium series. **By creating a hybrid of traditional processes and materials, GENDZO PROCESS® creates parts with increased value and performance levels.** GENDZO PROCESS is exclusively patented by Altheora.



Every year, ALTHEORA Shift holds a call for industrial, innovative and sustainable projects: **BOOSTERS**. Their objective: develop new technological solutions, reveal and produce innovative and sustainable industrial projects starting today.



our achievements

JC DECAUX

ALTHEORA manufactures the most iconic urban outdoor furnishings in Paris - the roof of the Morris columns for the city of Paris since 2019. The challenge was to respect its mythical design while opting to employ a responsible manufacturing process using linen fibers, and guaranteeing that the column is completely waterproof.

Production: medium quantities

Manufacturing processes: injection, SMC, RTM and painting



TRIGANO

As of this year, ALTHEORA manufactures the front roof of the CHALLENGER & CHAUSSON brand's emblematic motorhome. Using composites improves the quality of the product and makes it easier to install.

Production: high quantities

Manufacturing processes: SMC and painting



IVECO

ALTHEORA manufactures the battery and air-conditioning unit fairings for hybrid buses in urban areas. The combination of manufacturing processes proposed by our design office protects the components and channels the airflow for proper use.

Production: high quantities

Manufacturing processes: SMC + injection



RENAULT TECH

Renault Tech has entrusted ALTHEORA with the manufacturing of the rear floors for its new Kangoo model for reduced mobility passengers. This composite part is more lightweight than sheet metal parts, but has still high structural properties.

Production: medium quantities

Manufacturing processes: SMC



ALSTOM

ALTHEORA manufactures power boxes for the Smart Coradia train produced by Alstom. The combination of manufacturing technologies ensures maximum protection and a perfect insulation.

Production: medium quantities

Manufacturing processes: SRTM + Contact



GRDF

GRDF has entrusted ALTHEORA with manufacturing the door of its latest innovation, Gazpar intelligent gas meter. Manufacturing this part in SMC guarantees perfect insulation and a resistance to extreme temperatures.

Production: high quantities

Manufacturing processes: SMC

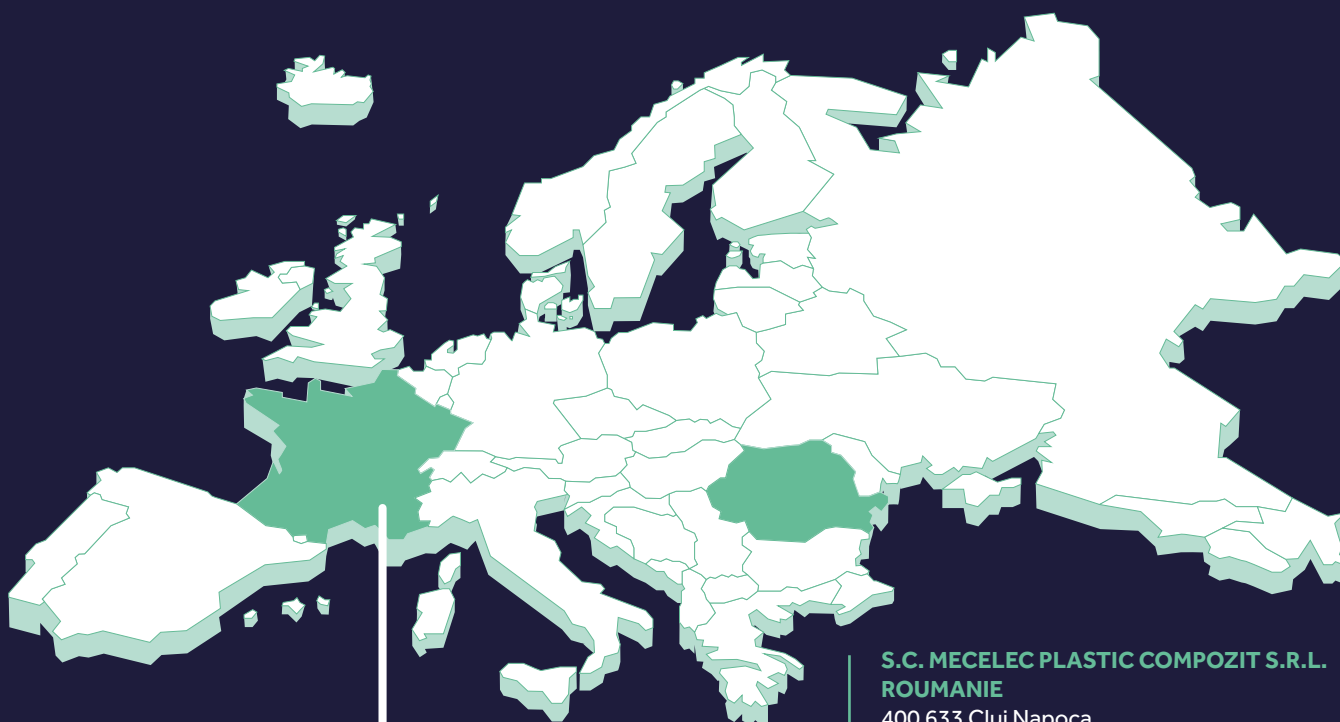


they trust us



our production plants

the industry quality and competitiveness mainly
located in Auvergne-Rhône-Alpes Region



S.C. MECELEC PLASTIC COMPOZIT S.R.L. ROUMANIE

400 633 Cluj Napoca,
Str. Luncii Nr 5A
ROUMANIE
Tél. : +40 0264 483 999
Fax : +40 0264 435 113

MAUVES (1)

Siège Social
Rue des Condamines
07300 MAUVES
Tél +33 (0)4 75 07 87 07
Fax : +33 (0)4 75 07 87 48
-

ST-AGRÈVE (2)

ZI Quartier Rascles
07320 SAINT-AGRÈVE
Tél. : +33 (0)4 75 66 90 90
Fax : +33 (0)4 75 30 25 33
-

ST-ÉTIENNE-DE-ST-GEOIRS (3)

ZAC Grenoble Air Parc
Avenue Louis Blériot
38590 ST-ÉTIENNE-DE-ST-GEOIRS
Tél. : +33 (0)4 76 35 31 11
Fax : +33 (0)4 76 35 47 85
-

BOURG-LÈS-VALENCE (4)

MC COATING
Rue Ernest Rutherford - Z.I. Marcerolles
26500 BOURG-LÈS-VALENCE
Tél. : +33 (0)4 75 83 15 01
Fax : +33 (0)4 75 83 01 94

contact@altheora.com



ALTHEORA